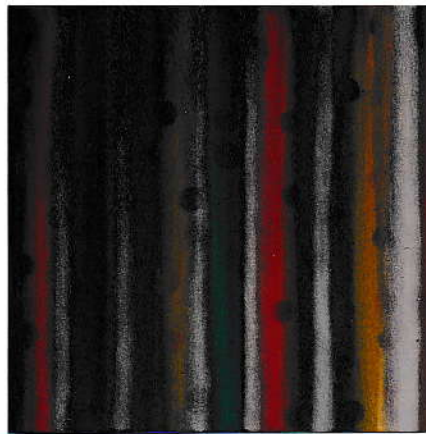
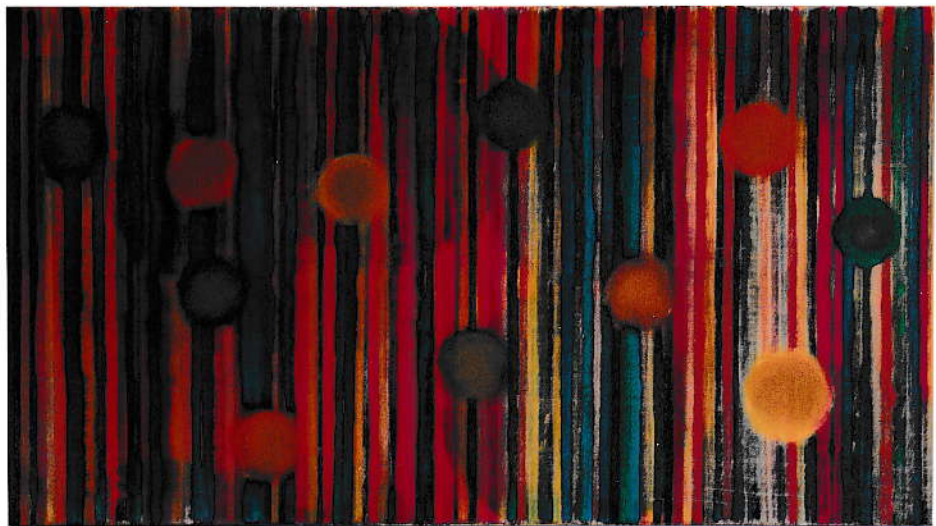


Dokumentation

Harry Jo Weilenmann



Oelfarbe/Leinen 60/60 cm 1994



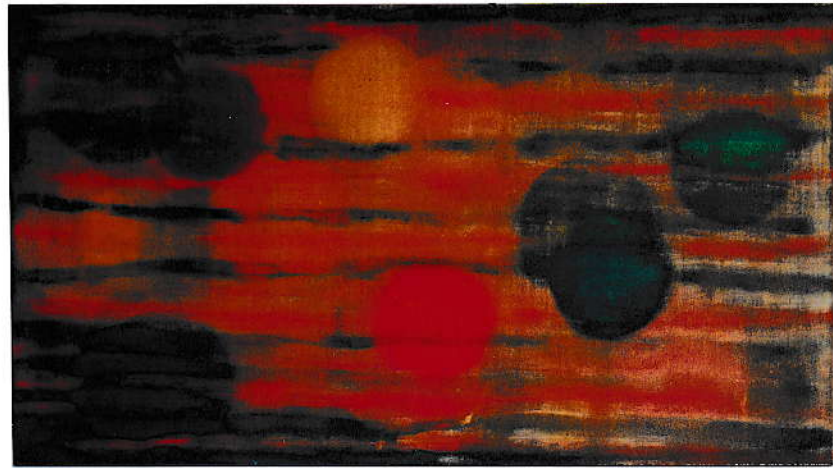
Oelfarbe/Leinen

52/96 cm

1994



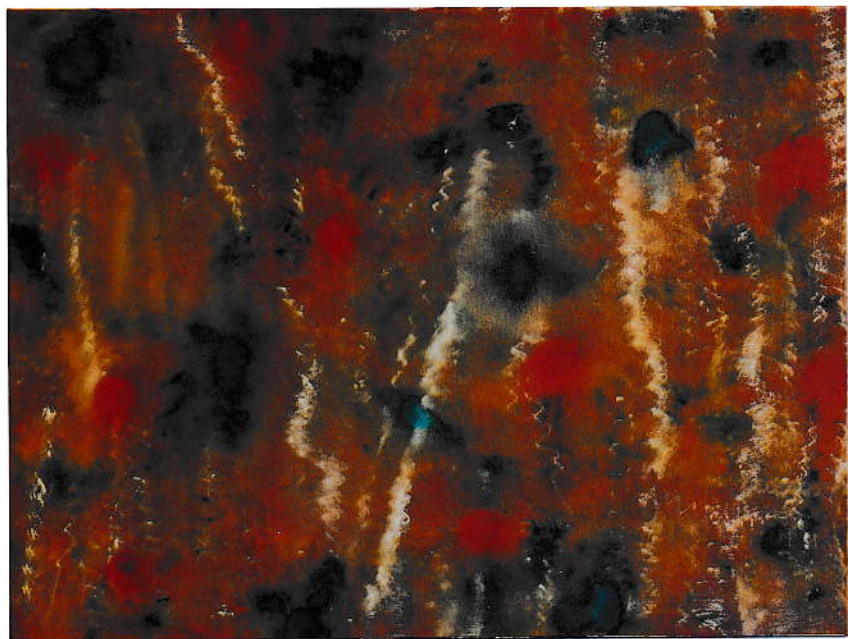
Oelfarbe/Leinwand 75/100 cm 1995



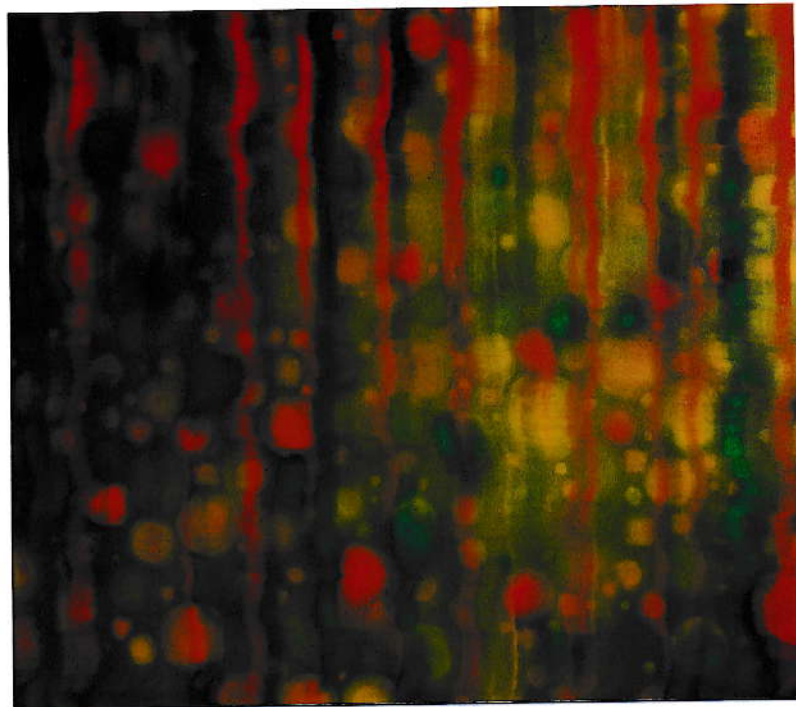
Oelfarbe/Leinen

56/100 cm

1994



Oelfarbe/Leinwand 75/100 cm 1994





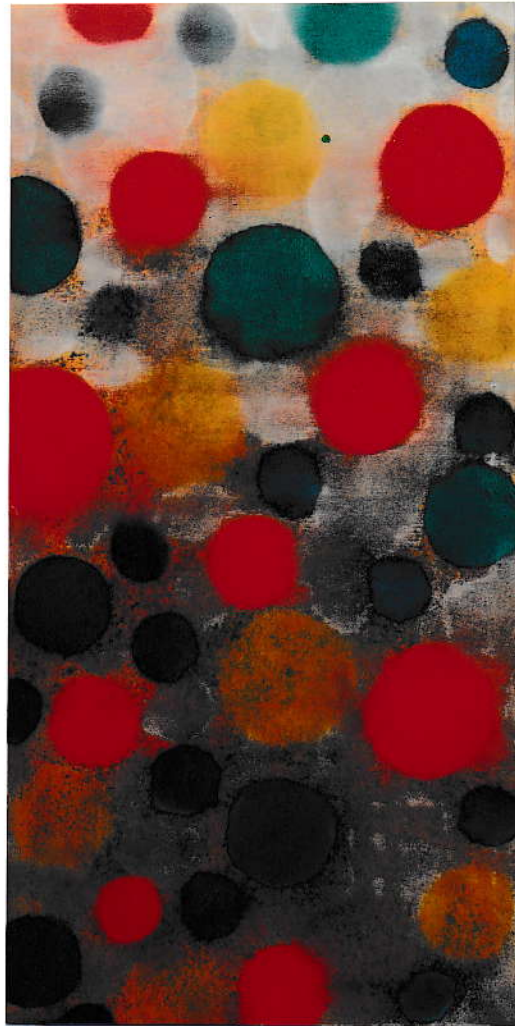
Oelfarbe/Baumwolle 60/150 cm 1994



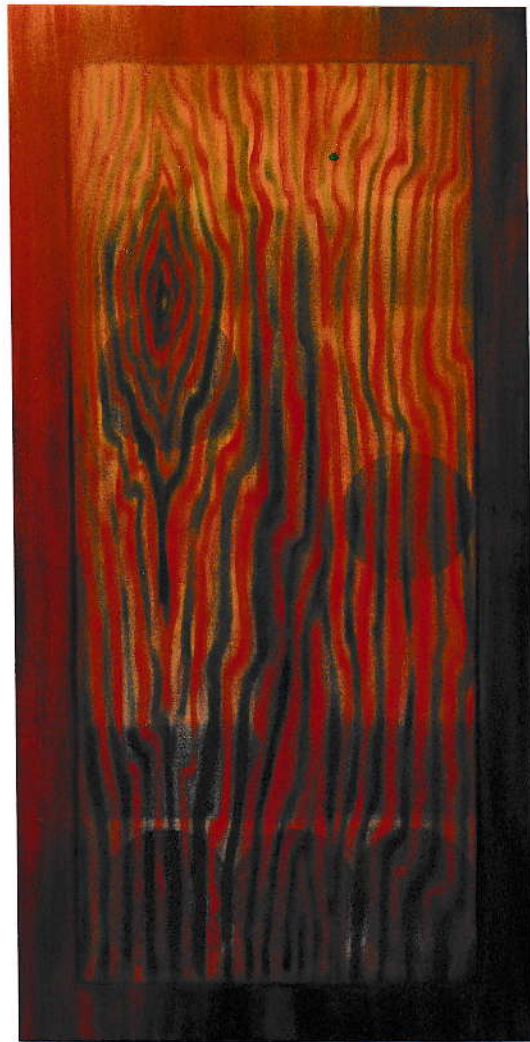
Oelfarbe/Leinen 60/60 cm 1994



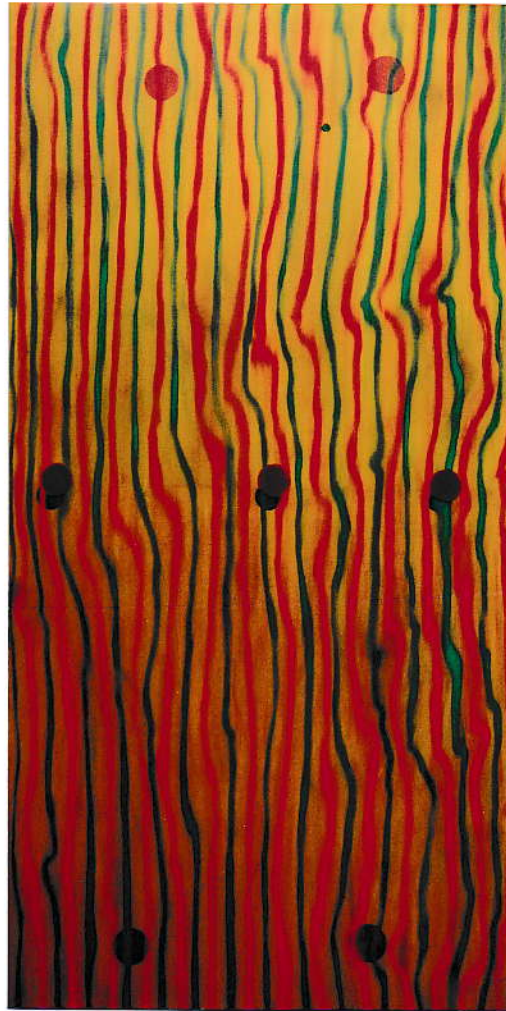
Oelfarbe/Leinen 60/60 cm 1994



Oelfarbe/Leinen 200/100 cm 1994

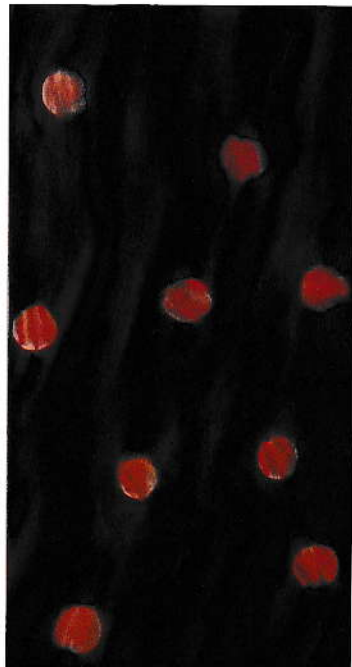


Oelfarbe/Leinen 200/100 cm 1994













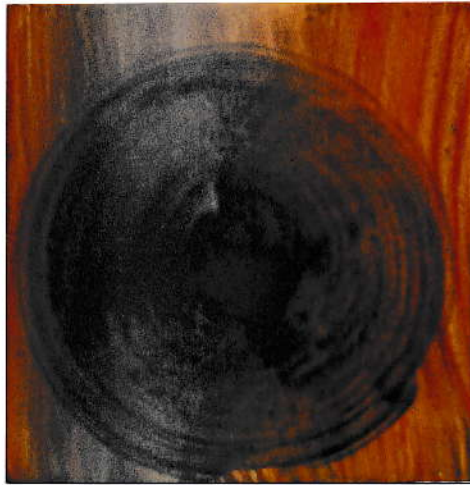
Lackfarbe/Kunststoffplatte 34/17,3 cm 1994







Oel- u. Lackfarbe/Holz 15/15 cm 1994

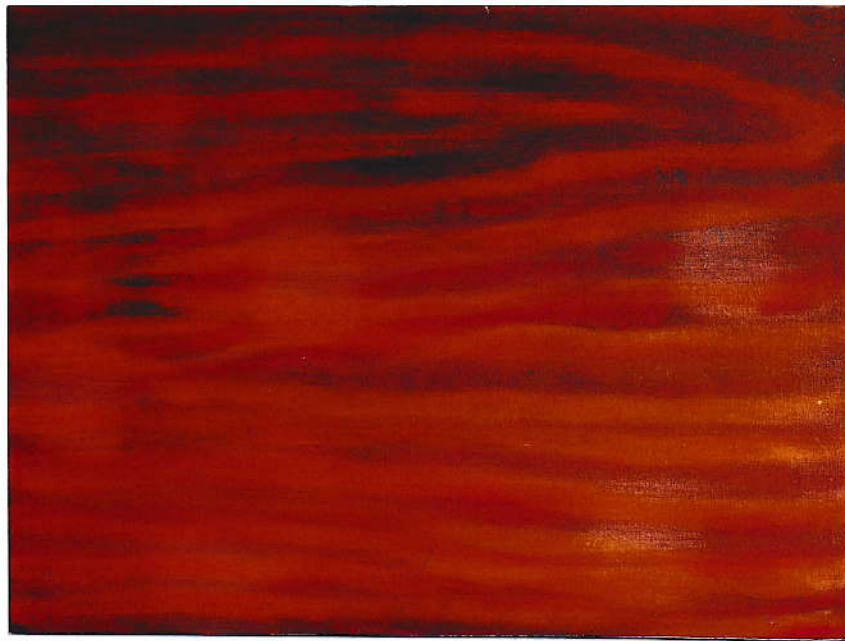




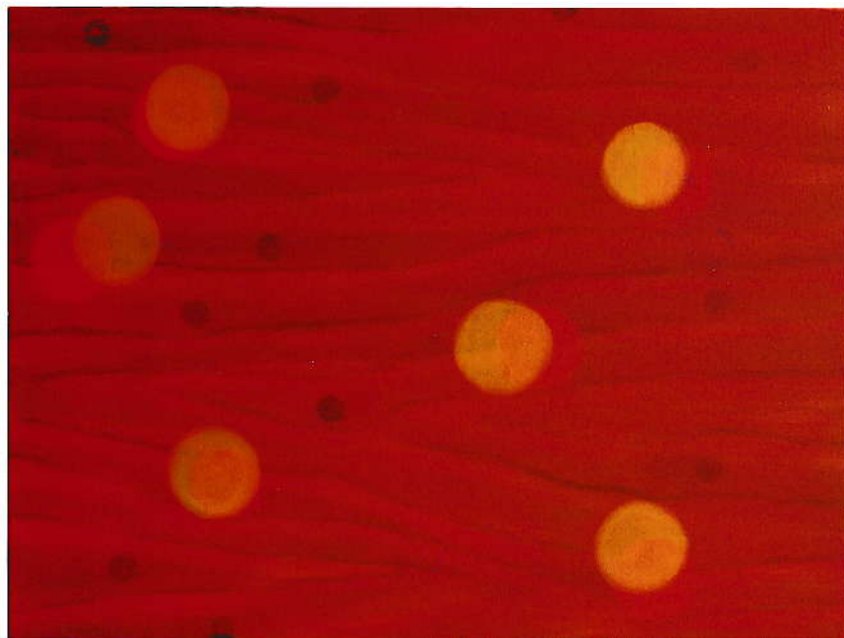
Oelfarbe/Leinen

140/185 cm

1994

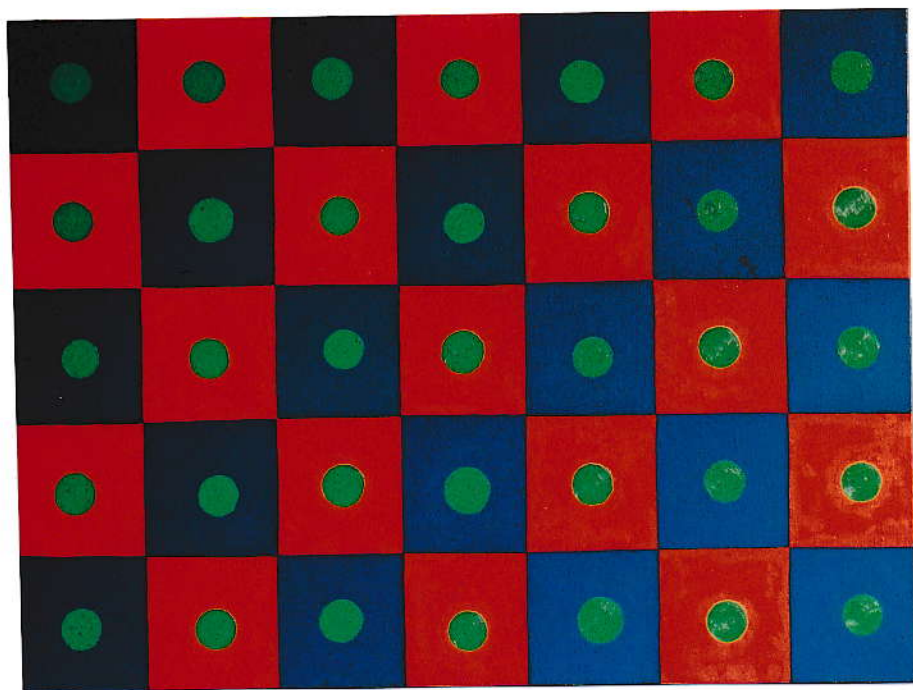


Oelfarbe/Leinwand 75/100 cm 1994

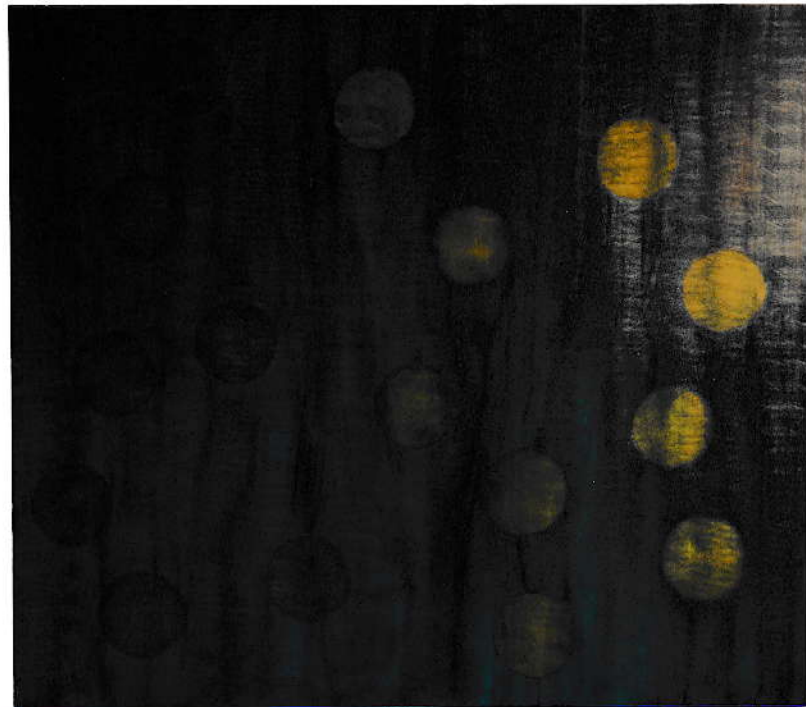




Oelfarbe/Leinwand 75/100 cm 1994



1995 öl/leinwand 75/100 cm



Oelfarbe/Nessel

150/170 cm

1994



Oelfarbe/Nessel

150/170 cm

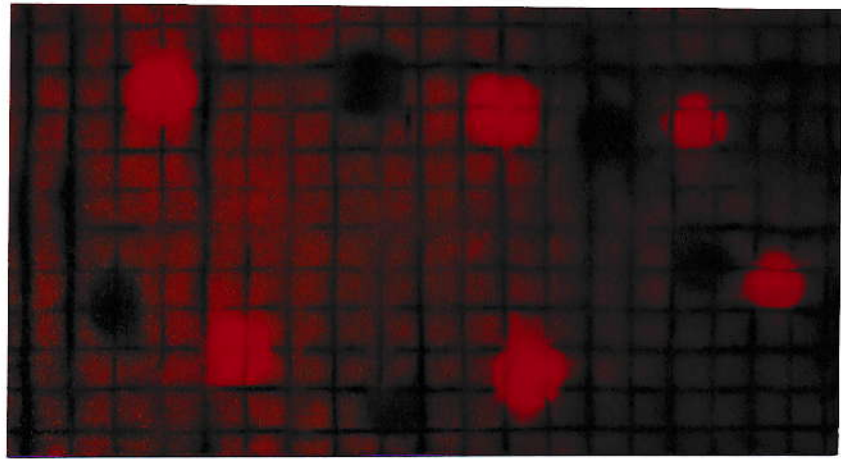
1994

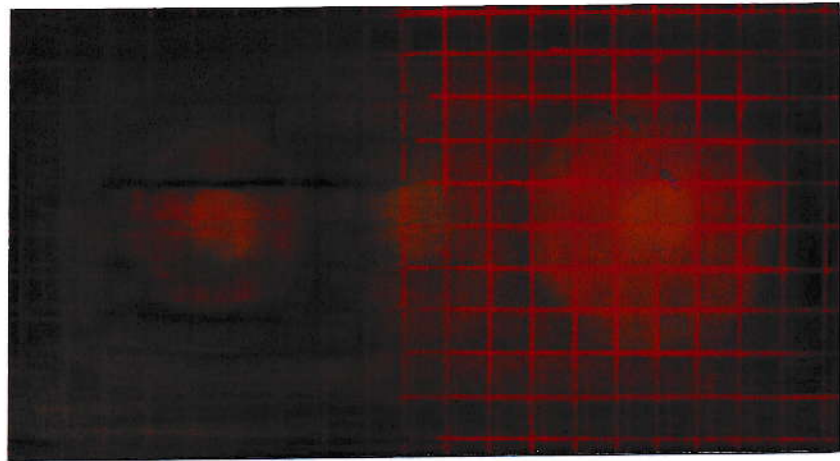


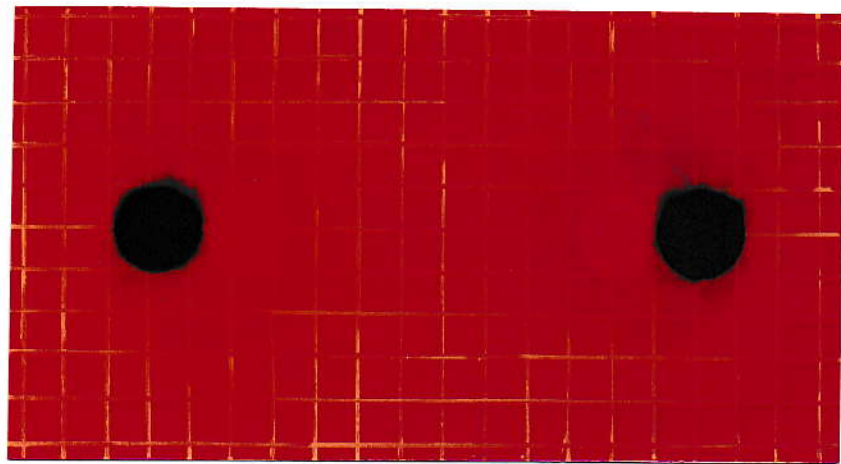
Oelfarbe/Nessel

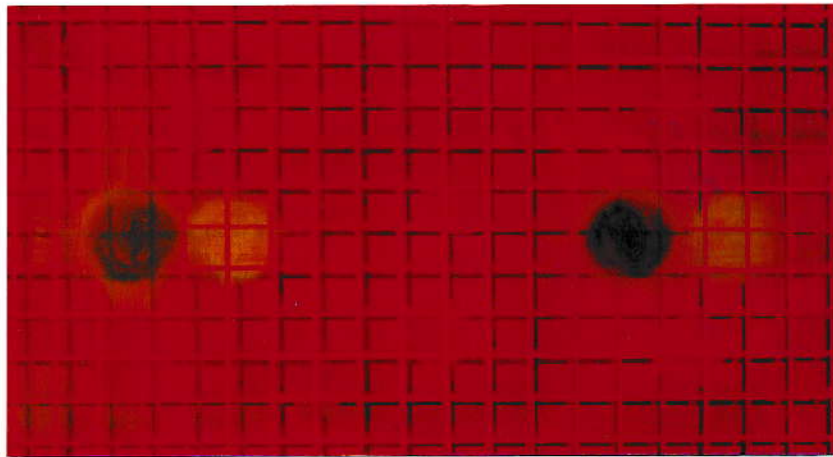
150/170 cm

1994

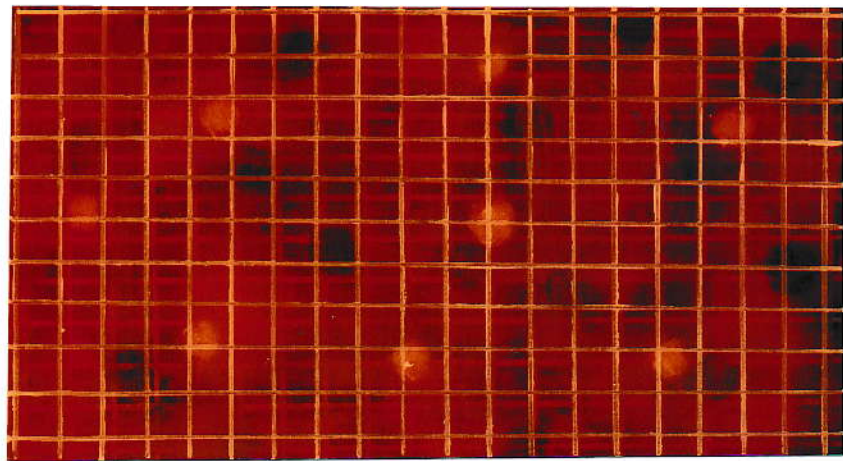


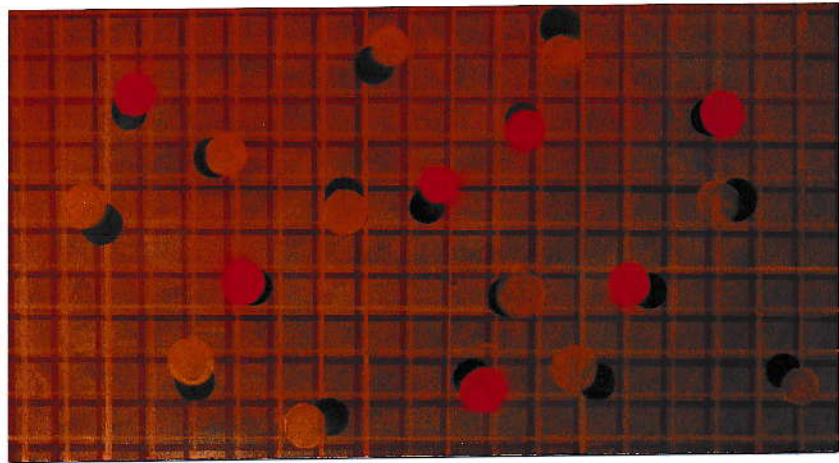


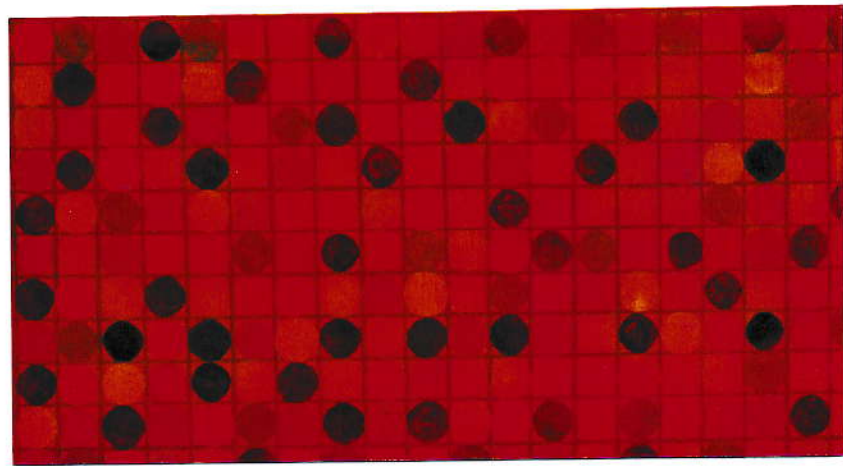


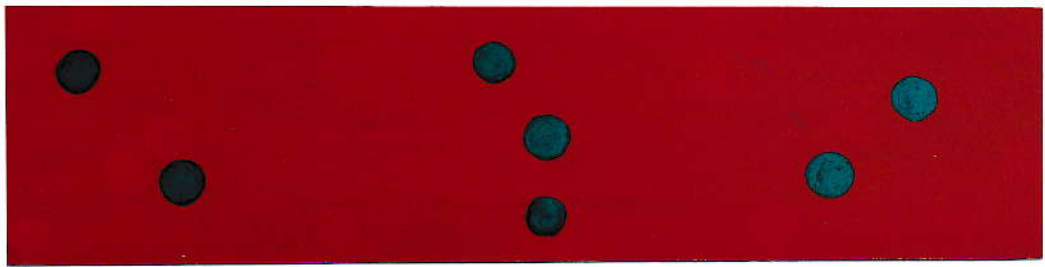


Oelfarbe/Rupfen 52/96 cm 1994









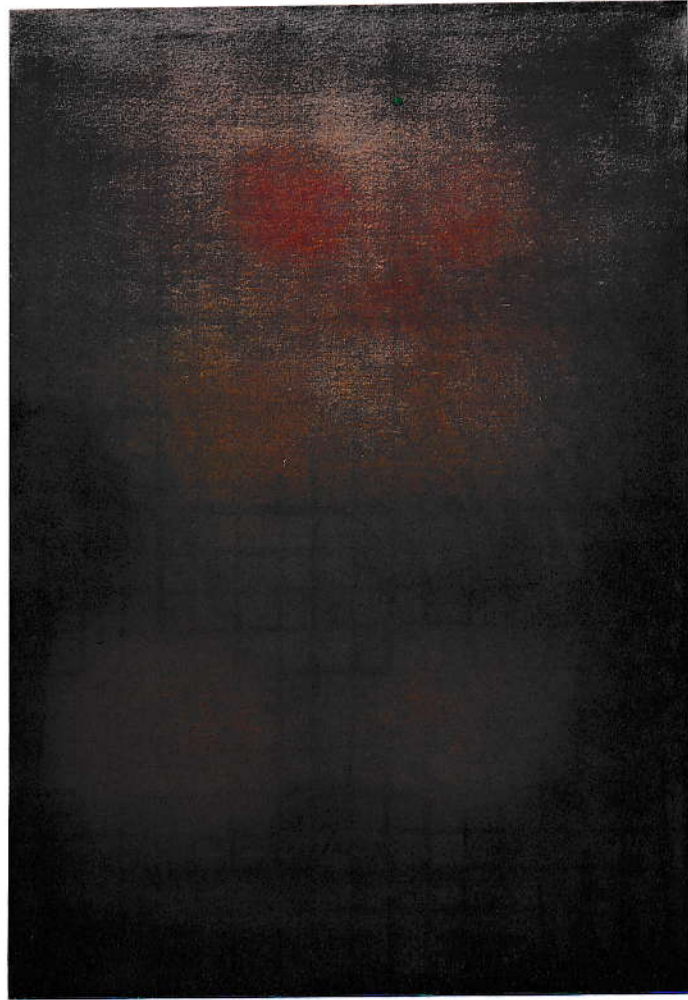




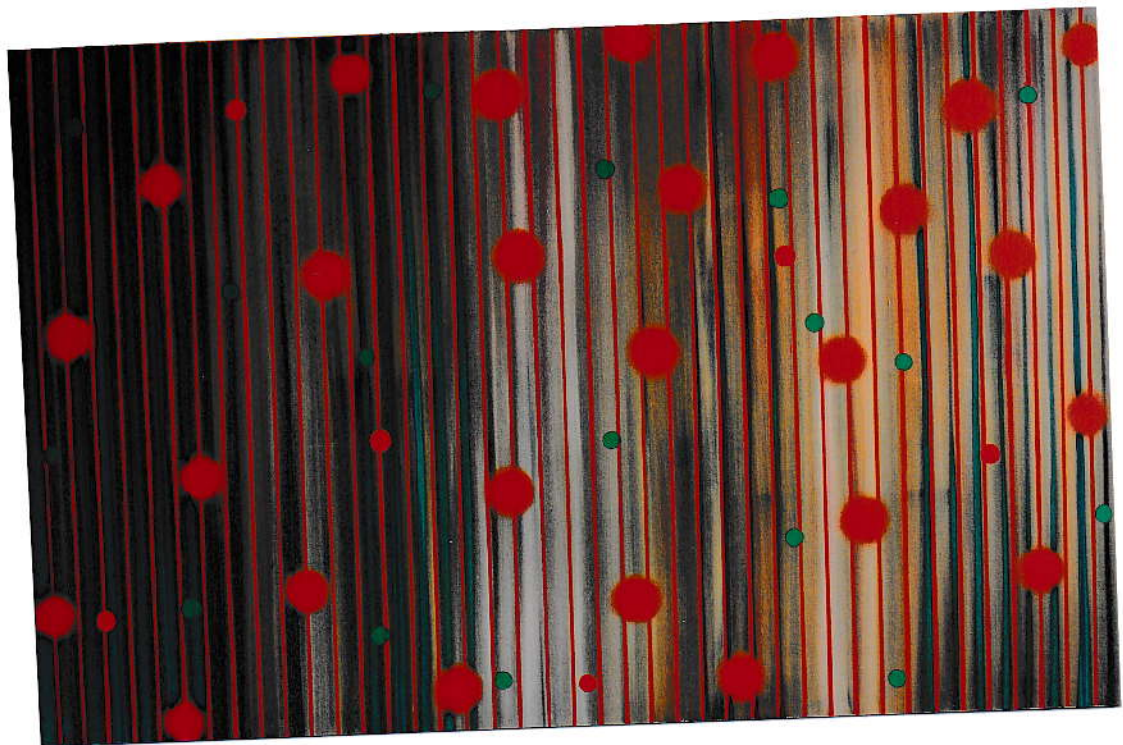
Oelfarbe/Karton

18/74,6 cm

1994



Oelfarbe/Rupfen 138/95 cm 1994



Oelfarbe/Leinen 135/210 cm 1994

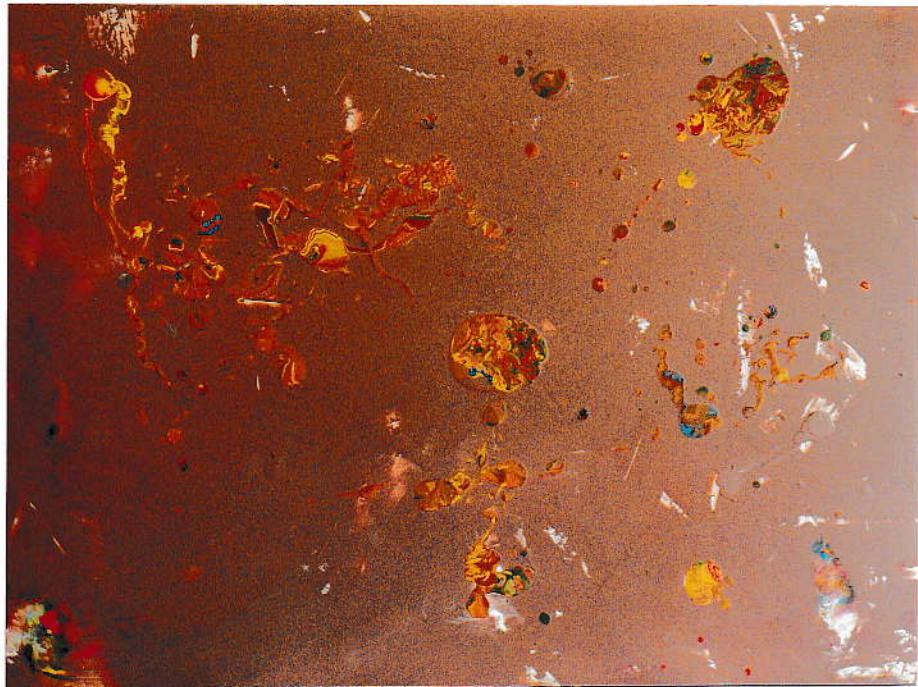




Oelfarbe/Nessel

150/170 cm

1994



Emaillelack/Alu

94,5/125 cm

1994



Emaillack/Alu

74,8/150 cm

1994

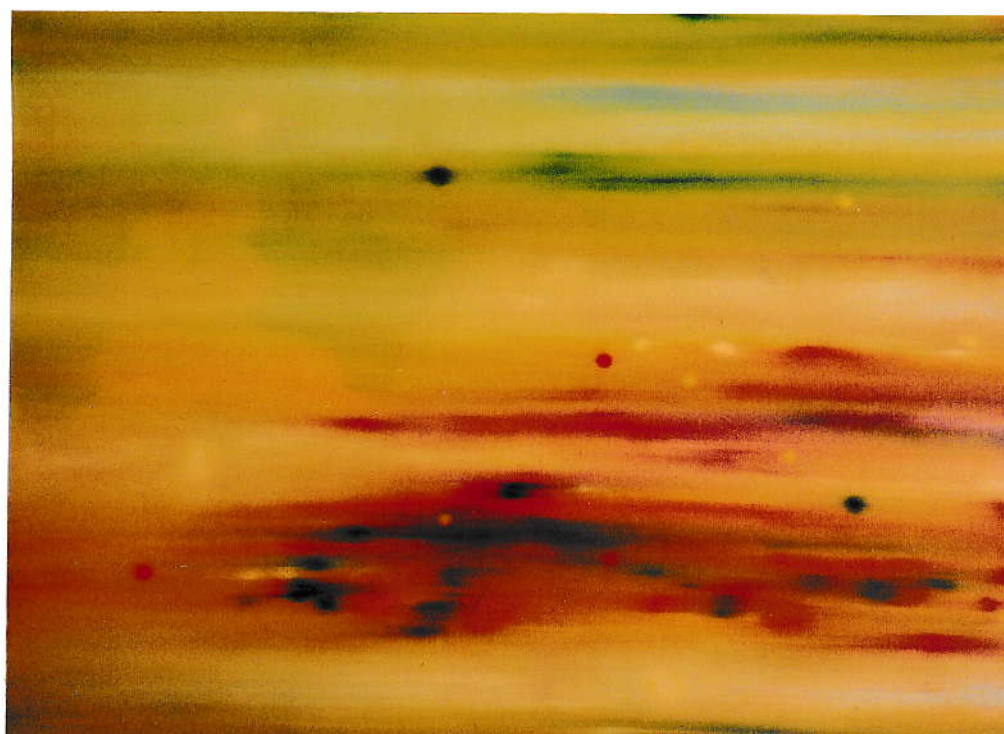




Oelfarbe/Leinwand

120/160 cm

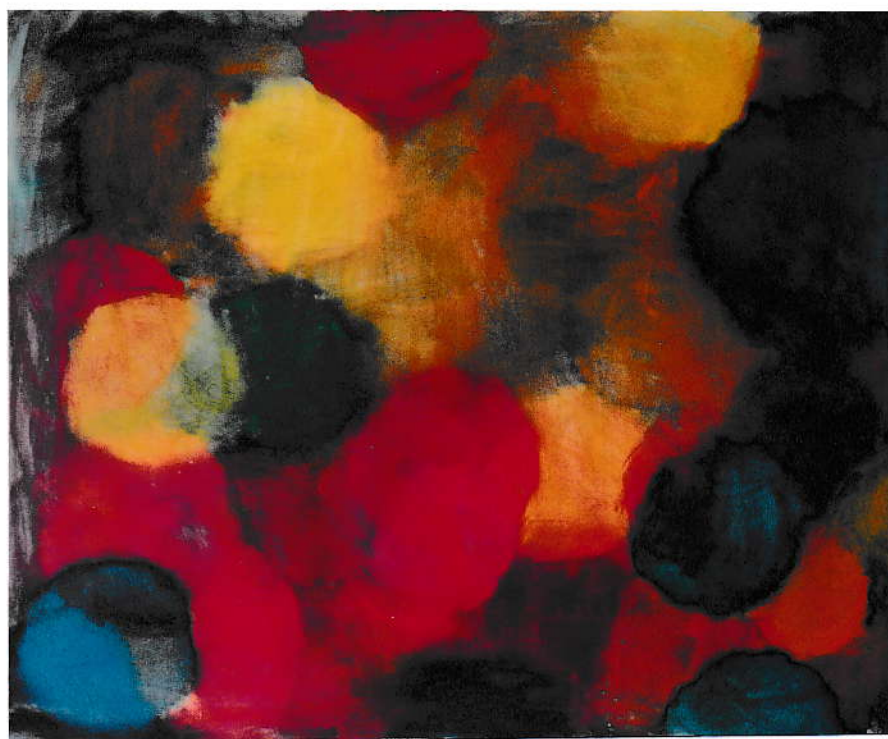
1994



Oelfarbe/Leinwand

120/160 cm

1994



Oelfarbe/Alluminium 100/121,6 cm 1994



Oelfarbe/Nessel

115/140 cm

1994

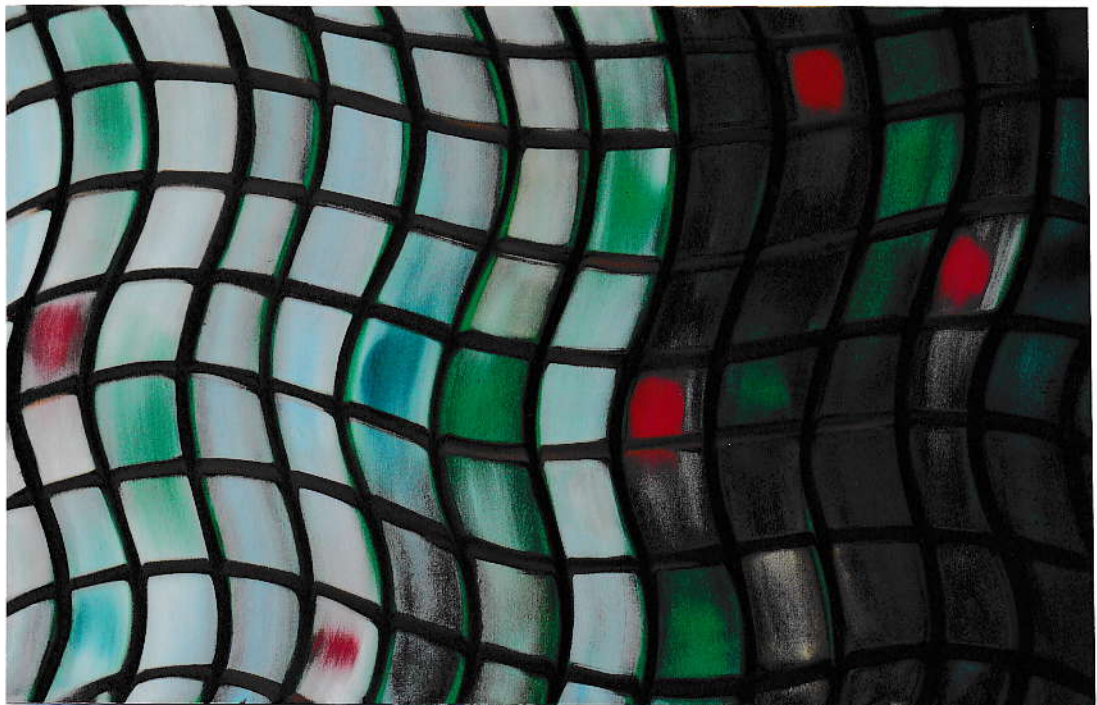




Oelfarbe/Rupfen

33/90 cm

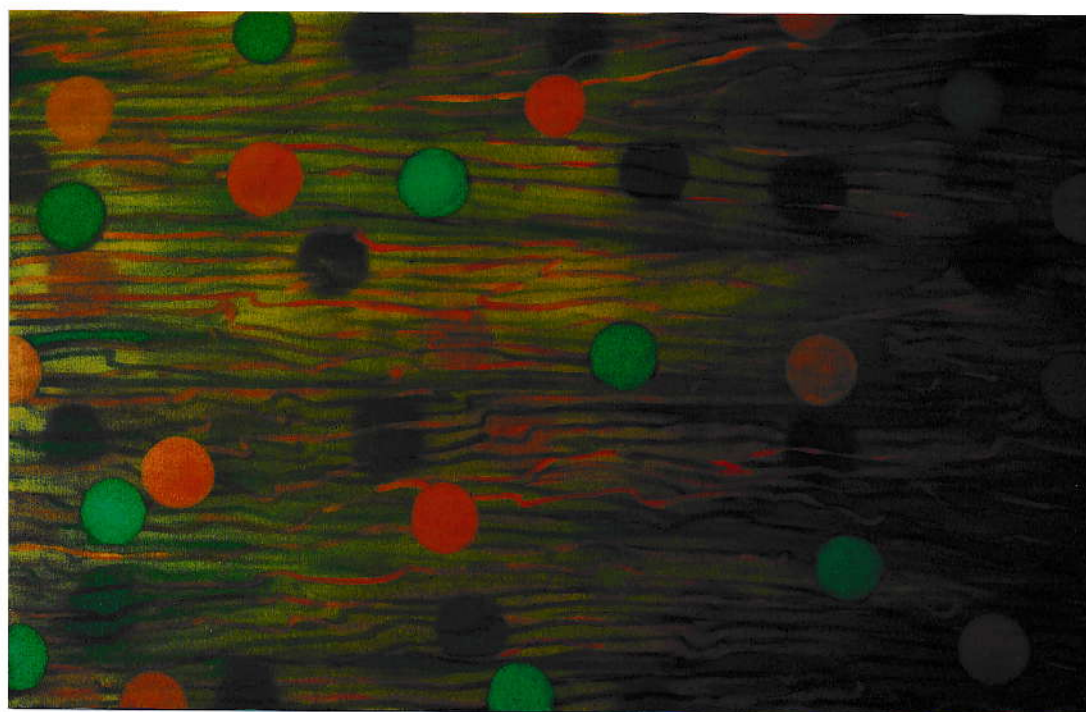
1993/94



Oelfarbe/Rupfen

135/210 cm

1994



Oelfarbe/Rupfen

135/210 cm

1994



Oelfarbe/Rupfen

135/210 cm

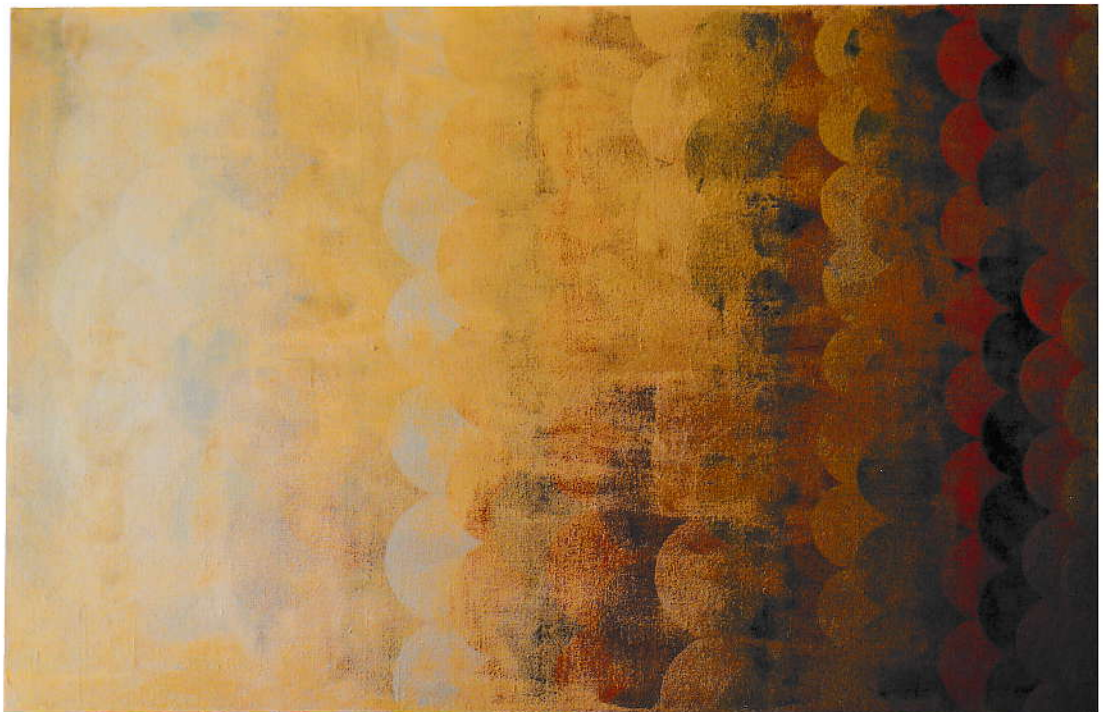
1994



Oelfarbe/Rupfen

135/210 cm

1994



Oelfarbe/Rupfen

135/210 cm

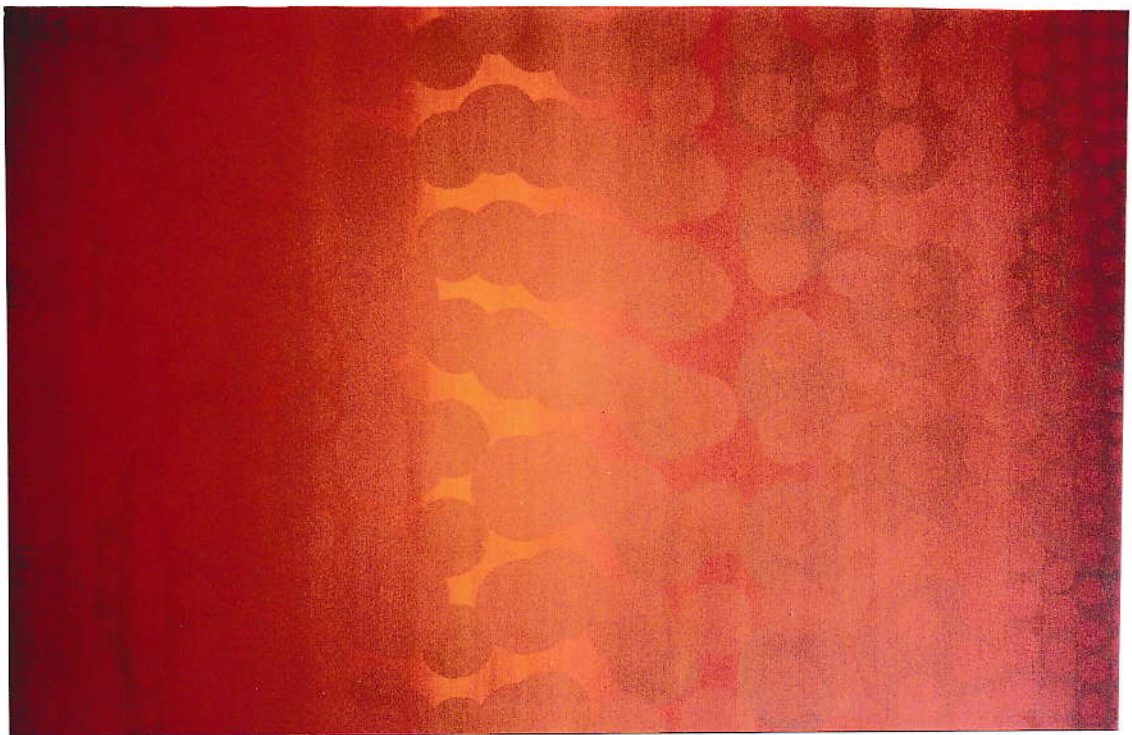
1994

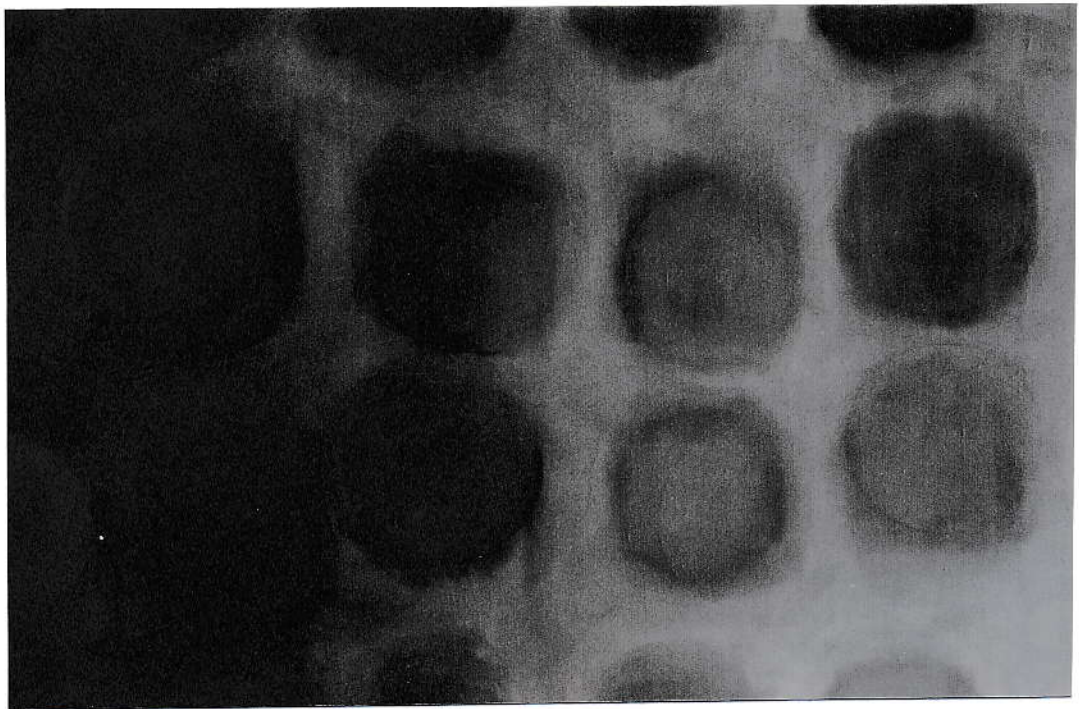


Oelfarbe/Rupfen

136/210 cm

1994







Oelfarbe/Rupfen

136/210 cm

1993/1994



Oelfarbe/Nessel

136/210 cm

1993





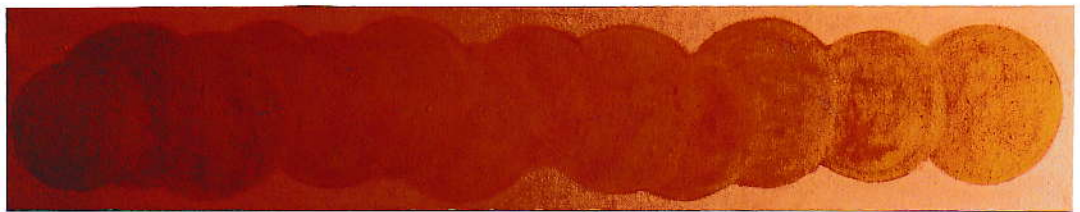
Oelfarbe/Rupfen 40/210 cm 1994



Oelfarbe/Leinwand

40/210 cm

1994



Oelfarbe/Rupfen

40/210 cm

1994

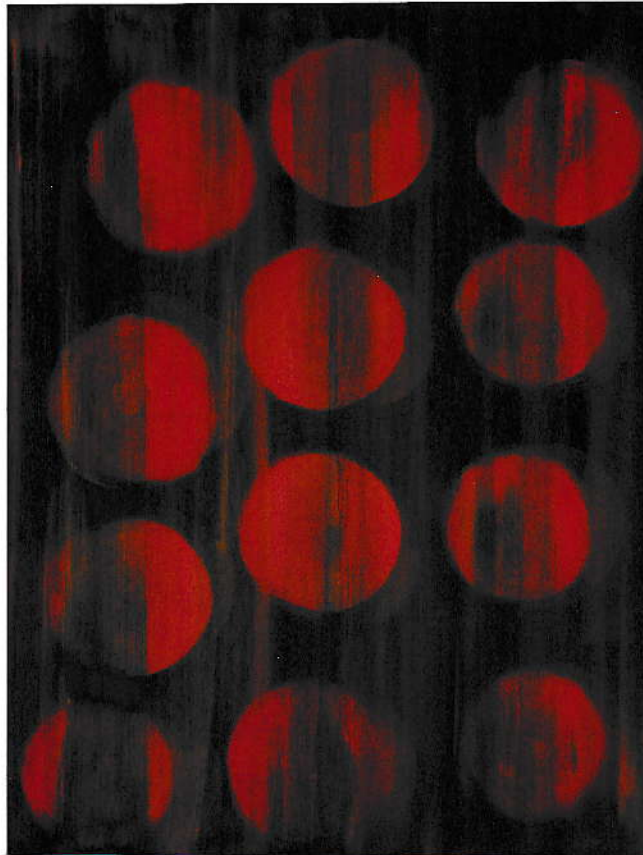


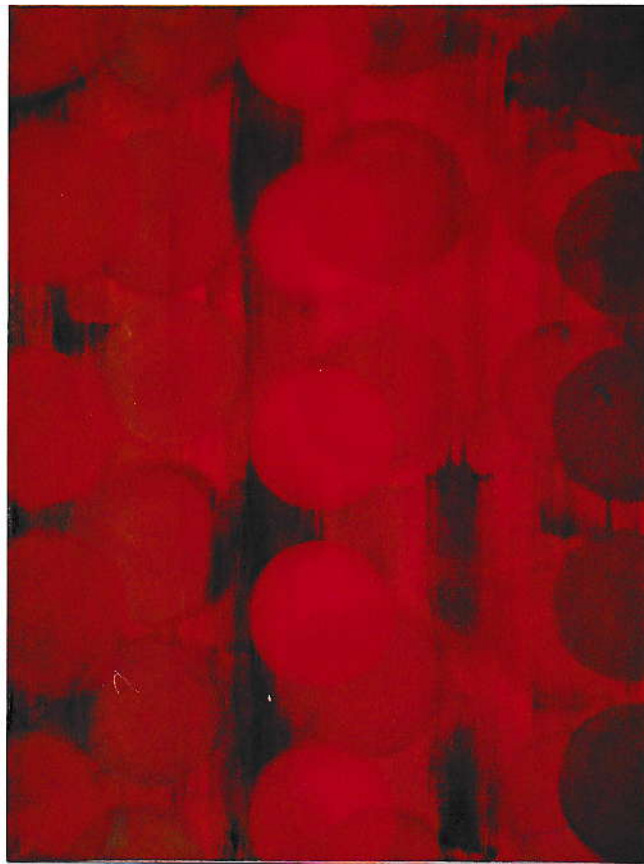


Oelfarbe/Leinwand

100/75 cm

1993







Oelfarbe/Leinwand

100/75 cm

1993



Oelfarbe/Leinwand 100/75 cm 1994

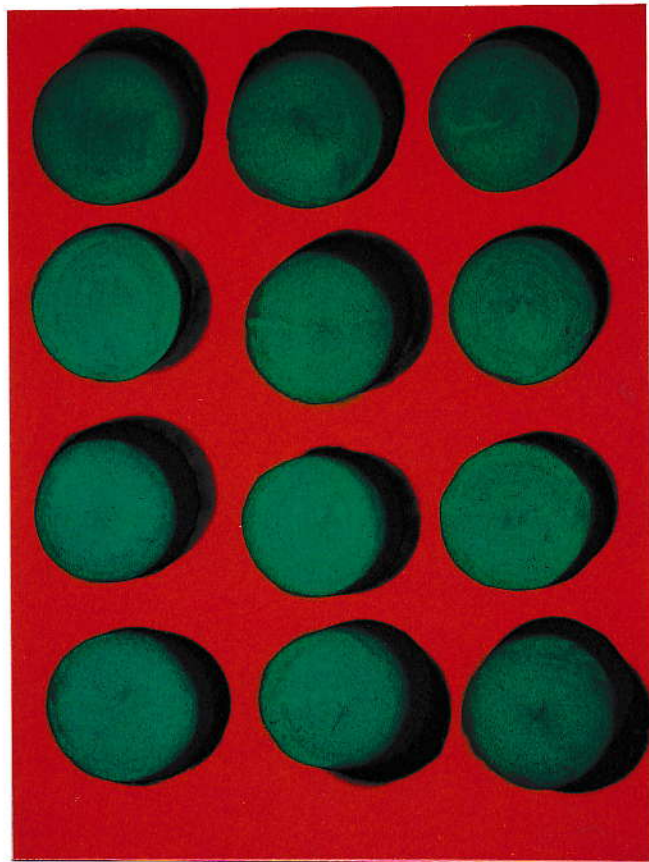


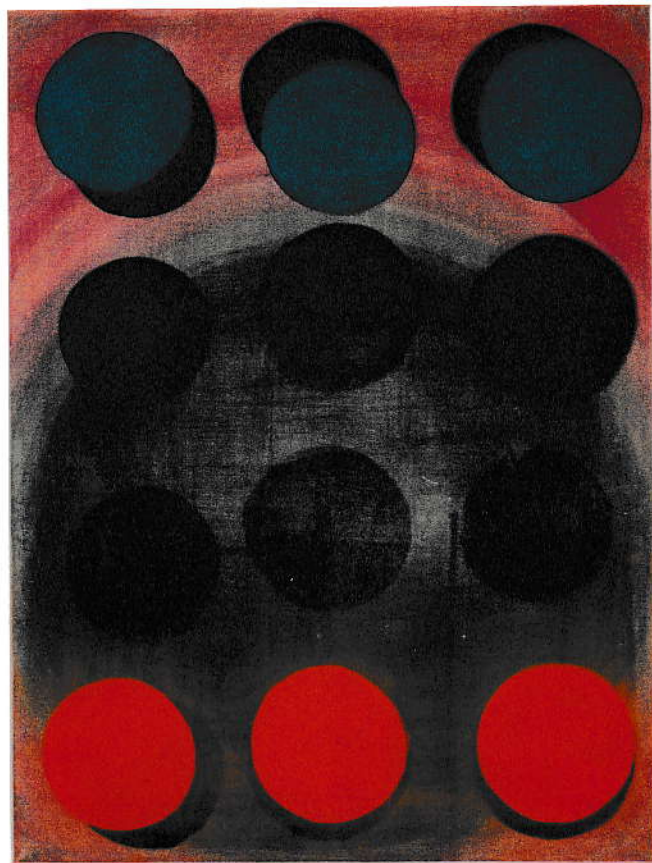
Oelfarbe/Leinwand

100/75 cm

1993







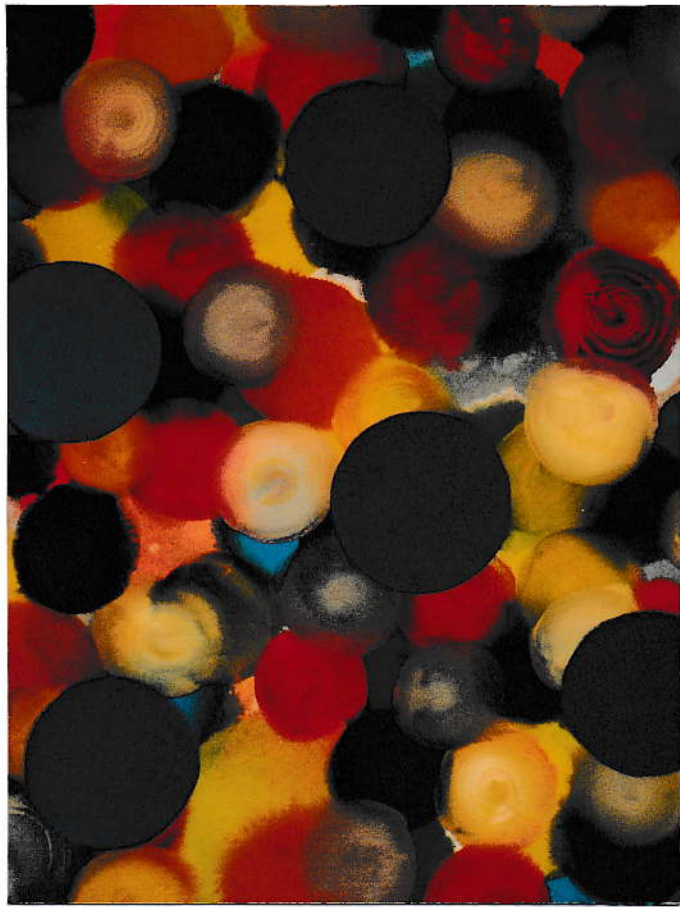
Oelfarbe/Leinwand

100/75 cm

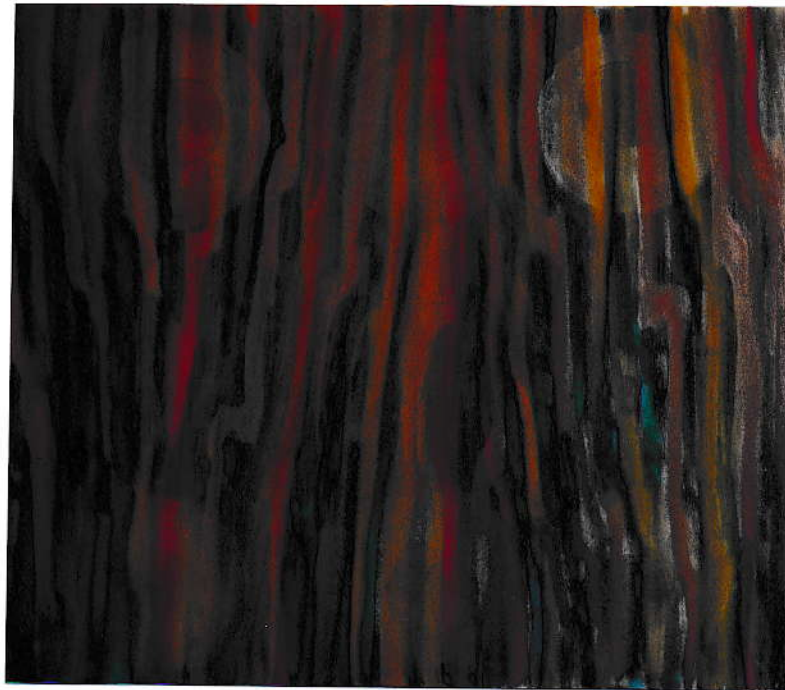
1993

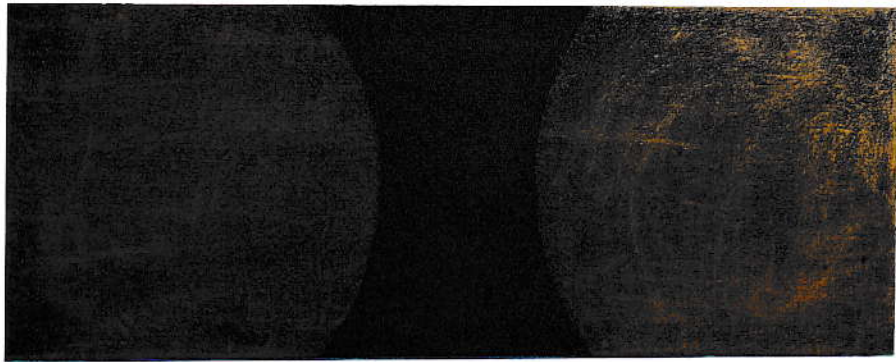












Oelfarbe/Rupfen

40/100 cm

1994



Oelfarbe/Rupfen

40/100 cm

1994



Oelfarbe/Rupfen

40/100 cm

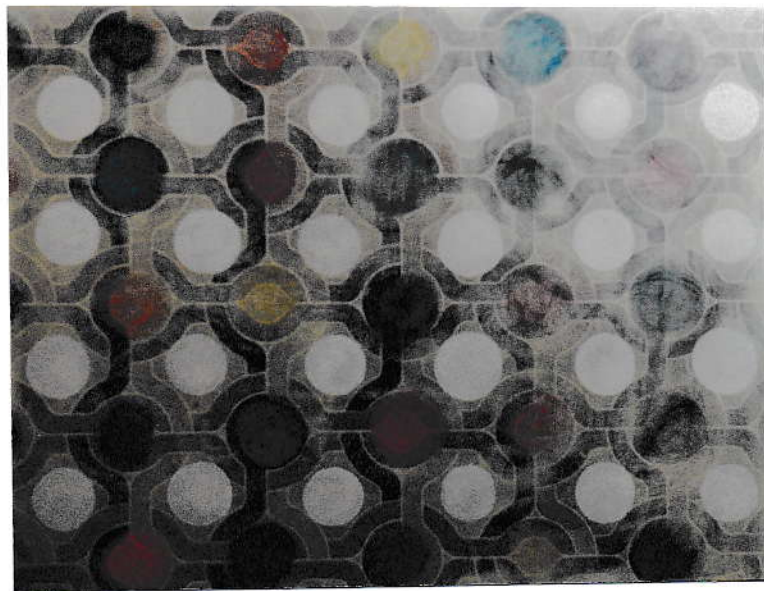
1994

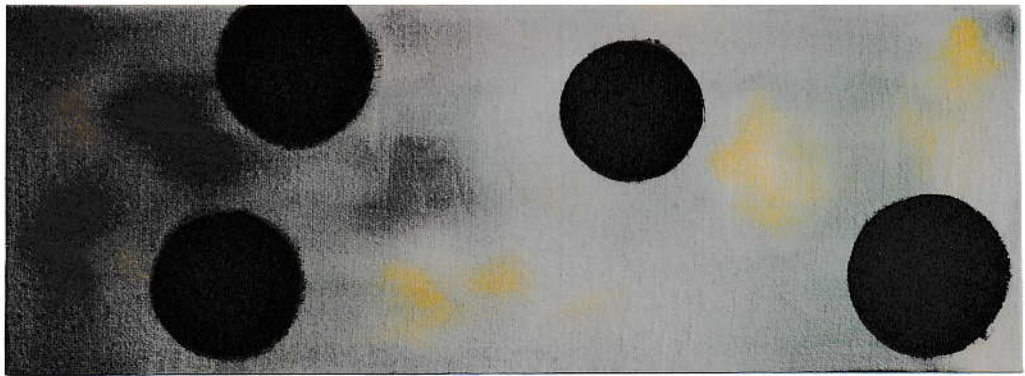


Oelfarbe/Rupfen

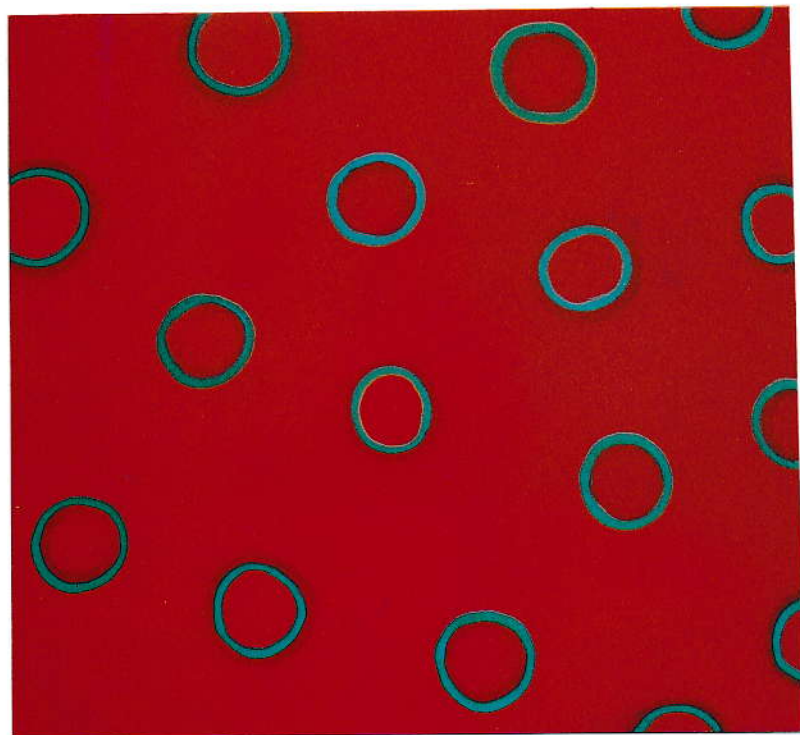
40/100 cm

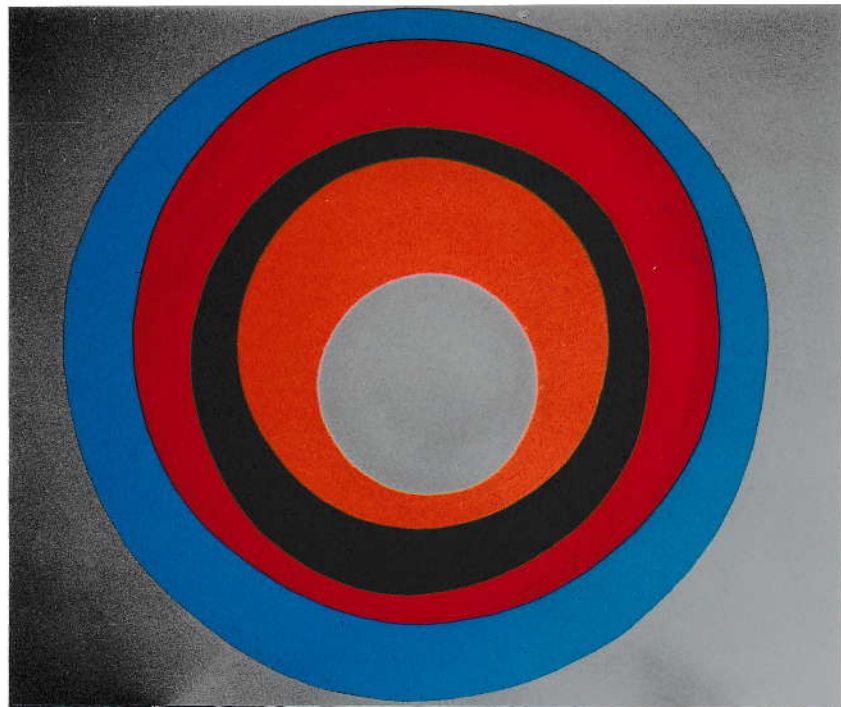
1994

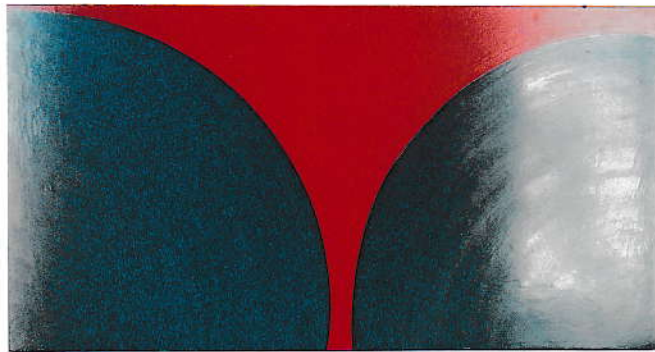


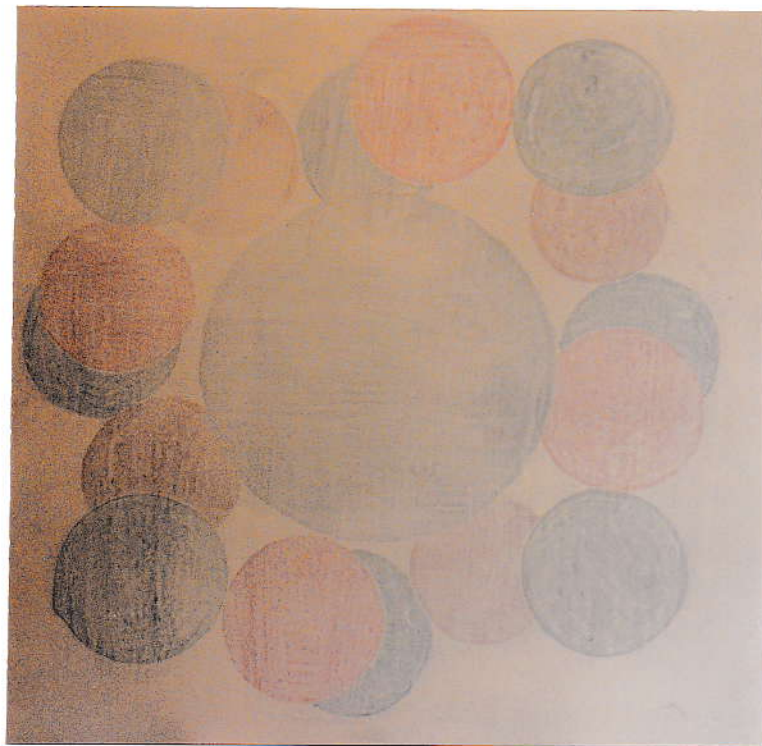














Emaillack/ Aluminium 130,1/78,2 cm 1993/1994



Dokumentation
der
Photographien

Harry Jo Weilenmann

Die folgenden Photos sind eine kleine Auswahl von Arbeiten aus dem Jahr 1994. Darin thematisiere ich Modelle von Wandmalereien. Ihre Präsentationsformen sind entweder grossflächige Diaprojektionen (ein Dia wird ständig auf eine Wand in einem abgedunkelten Ausstellungsraum projiziert), oder eine Vergrösserung im Format 70 auf 100 cm.

